

Productive,
high quality
colour scanning.

DR6050C

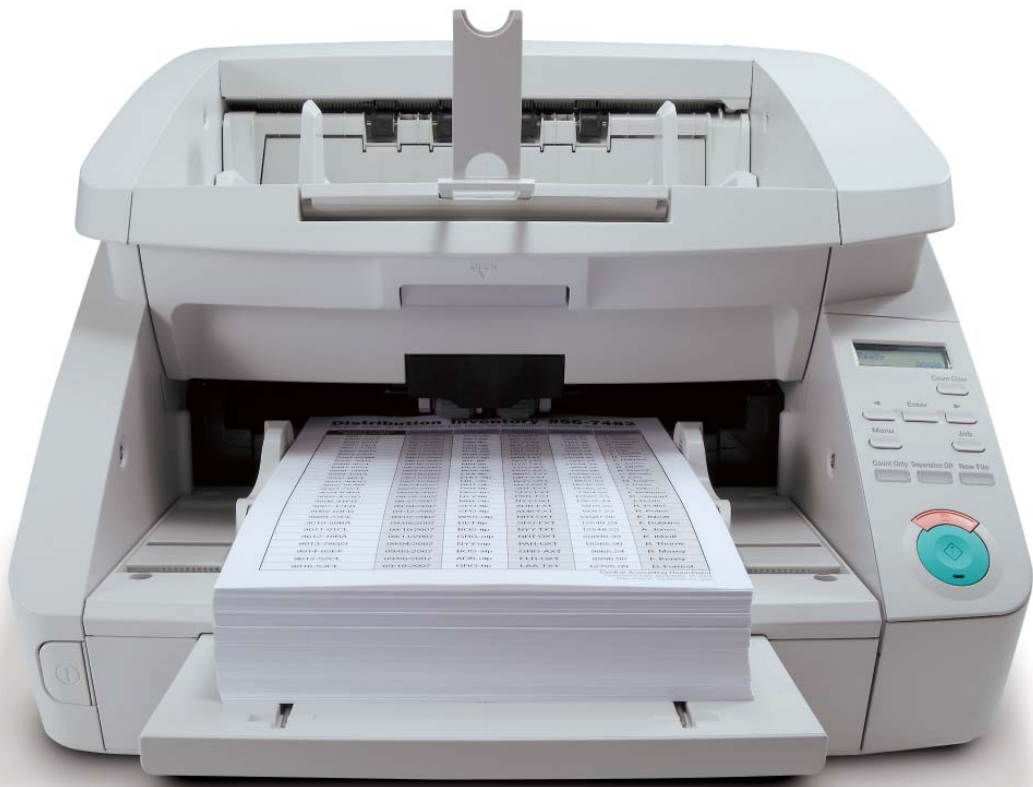
DR7550C

DR9050C

HIGH SPEED A3

PRODUCTION SCANNERS

you can



imageFORMULA

Canon

Fast, efficient and economical.

Need to manage documents and data more productively and cost effectively? That's exactly what Canon's latest high speed DR6050C, DR7550C and DR9050C colour scanners are designed to help you do. Use their ideal combination of speed, quality, functional flexibility and high capacity to increase your workflow capabilities while reducing costs and time consuming manual tasks.

Keeping you up to speed

Because high speed is high priority, scanning is quick at up to 112 pages per minute for the DR9050C Scanner. Even when scanning in Colour, Black and White or Greyscale at up to 300 dpi while using multiple image processing functions - thanks to Canon's inbuilt image processing chip you get more quality scans in less time.



A4 documents
Portrait - 200/300dpi

DR-6050C



DR-7550C



DR-9050C



A4 documents
Landscape - 200/300dpi

DR-6050C



DR-7550C



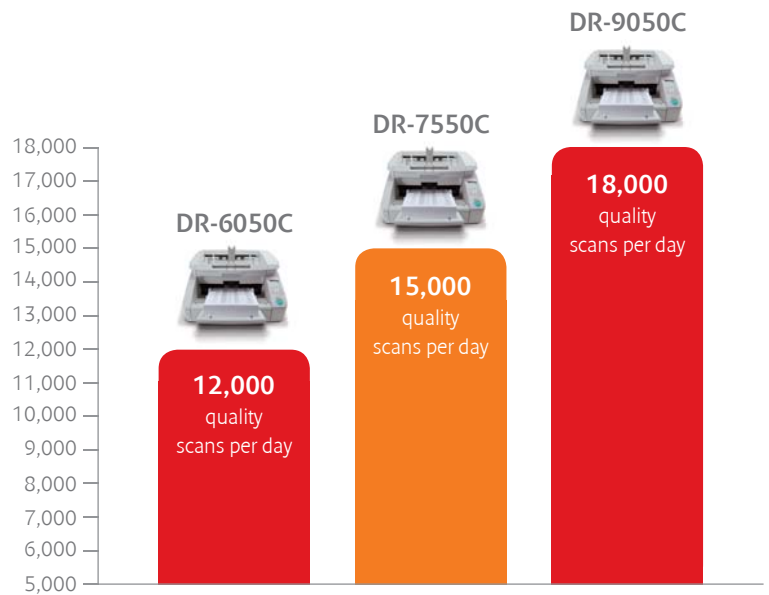
DR-9050C

Built to be busy

Because scanning is critical to so much of your document management and archiving, you need scanners durable enough to deal with heavy work loads. That's why these high speed models are highly robust, easily handling up to 18,000 scans per day with minimal maintenance, providing both reassurance and a healthy return on investment.

From a highly productive source

If you need results, where better to start than with the proven technology of one of the market leaders in high speed business document scanning. Every Canon model contains the latest cutting edge features and refinements designed to exactly match the business needs of managers while maximising productivity for users.



Note: These are suggested daily scanning volumes based on scanning speed and assumed daily time of use.



Complex scanning achieved with ease.

Canon's versatile and reliable colour production scanners are a model workforce when the pressure is on and the requirements are ever-changing. Invoices, reports, application forms, delivery notes, presentation material and specialised documents can all be handled easily and processed swiftly.

High-volume feeder with three selectable positions

The home position of the motorized paper feed tray can be set to one of three heights according to the volume of a typical batch, which helps minimize the wait time before scanning begins. Each position accommodates up to approximately 100, 300, and 500 sheets, respectively.*



Lowest position (500 sheets)



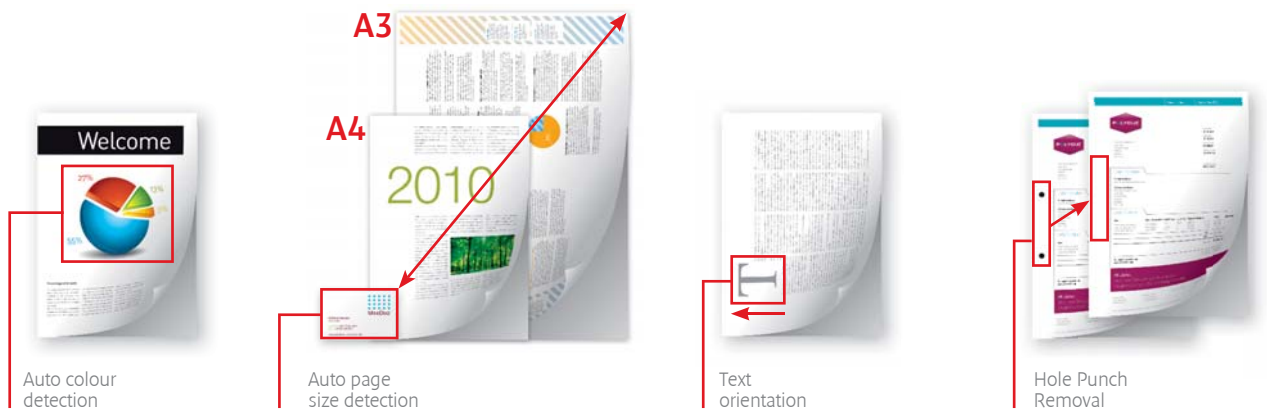
Middle position (300 sheets)



Highest position (100 sheets)

Versatile Feeding Options

Mode	Retard Roller	Feed Roller	Pick Up Roller	Feed Tray Position	When needed ?
Automatic Feeding Mode	ON	ON	ON	Set with operation control panel for 100, 300, 500 sheets*	For majority of scanning requirements with fast reliable feeding and separation of documents.
Continuous Manual Feeding Mode	ON	ON	OFF	Set with operation control panel for 100, 300, 500 sheets*	For fragile /damaged /poorly prepared documents where operator can control the feeding speed while still having document separation.
Bypass Manual Feeding Mode	OFF	ON	OFF	Fixed to the Top position	For thick card, multi-sheet, folders, folded documents (eg A1 size in folio mode) where they will be scanned 1 by 1 with no separation required.



Advanced image processing

Now you can automatically detect the size and colour format of every document, as well as recognise-and-correct document orientation, all on-the-fly while scanning, delivering critical business information on time.



Sizeable capacity

These versatile machines can go up to A1 size in Folio Mode for larger documents such as architect plans and drawings. They can also handle up to 3 metres in length too – perfect for longer applications such as electrocardiograms, instrumental data readings and log files.

Instant problem detection

Canon scanners are built for quick error correction and minimum workflow disruption. In the rare event of a double feed, an ultrasonic sensor immediately notifies the user for immediate resolution. Canon scanners also have Staple Detection which automatically stops feeding preventing any unnecessary damage to your documents.

Inspiration for all your scanning applications

With their high productivity and reliable operation, Canon's A3 colour production scanners make business sense for many business sectors with high document volume scanning and processing requirements:

Financial Services

Government

Healthcare

Transport

Service Bureaus

Energy saving efficiency.

Fast processing, flexibility and fantastic results aren't all you need from a scanner. What about simplicity for users, the effect on the environment and how easily you can get your scans across your business network? Fortunately, all these business critical issues are addressed – and accomplished – by Canon's DR6050C/DR7550C/DR9050C production scanners.



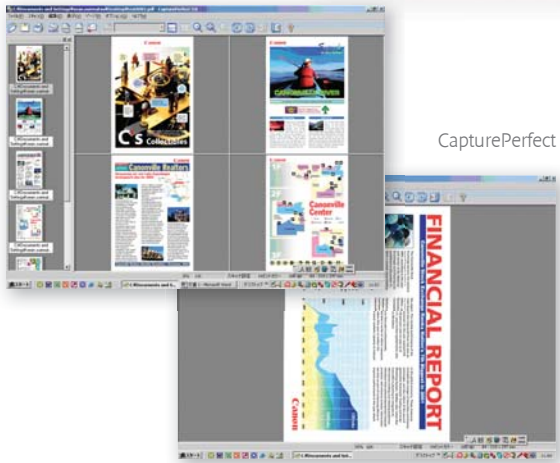
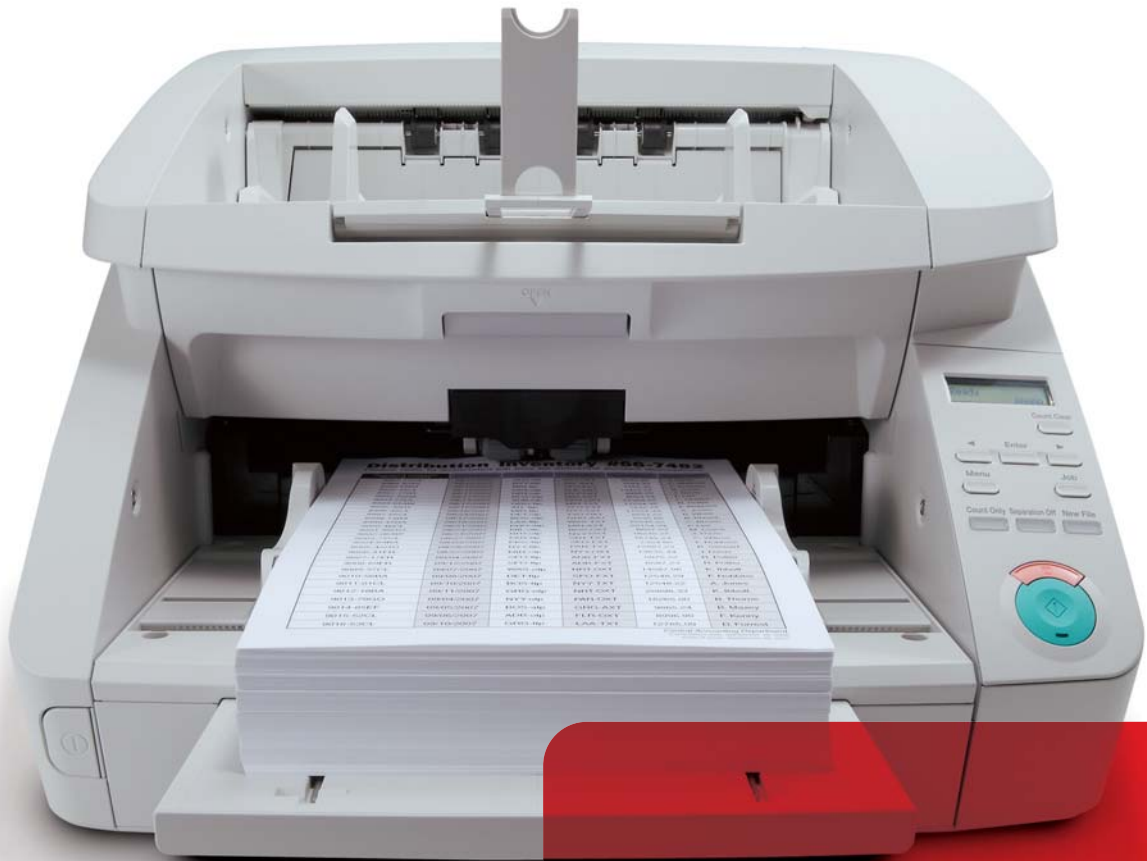
Power saving capabilities

Even with their powerful production capabilities, Canon's A3 production scanners can still keep their energy consumption down. While scanning they save often 50% more than many competitor models making them a class leader in energy efficiency. Which is good news for both the environment and your electricity bills.

Operator conscience design

The front-feed design of the DR-9050C provides both comfort and convenience allowing you to load, feed and remove documents effortlessly. Furthermore, the intuitive control panel provides easy scan operation with large start and stop scanning buttons, a clear message display screen, and a useful job key to quickly launch pre-defined scanning jobs.





CapturePerfect

Capture and send scans effortlessly

Use Canon's CapturePerfect software to save time and effort integrating your scanned digital images into your workflow. It's that easy to combine image input and business output fast and cost effectively.

Control panel



- LCD display
- Count clear key
- Job key
- Stop
- Start

Menu (open User Mode)

Specification: imageFORMULA DR6050C/DR7550C/DR9050C

Type Document Reading Sensor Optical Resolution Light Source Reading Side	Desktop Type Sheet Fed Scanner CMOS CIS 3 Line Sensor 600dpi RGB LED Front / Back / Duplex				
Interface	Dual Interface (High Speed USB 2.0 & SCSI-3)				
Dimensions Weight	Tray closed: 480 (W) × 531 (D) × 311 (H) mm Tray opened: 480 (W) × 718 (D) × 390 (H) mm Approx. 22.5 kg				
Power Requirements Power Consumption Operating Environment Environmental Compliance	AC220 - 240V (50/60Hz) Scanning: 84W, Sleep mode: 3.9W (AC 220-240V) Power Turned Off: 0W 10 - 32.5°C (50 - 90.5°F), Humidity: 20 - 80% RH RoHS and ENERGY STAR				
READING SPEED¹ Portrait (A4)	B&W/Greyscale	200/300dpi	DR-6050C 60ppm/120ipm	DR-7550C 75ppm/150ipm	DR-9050C 90ppm/180ipm
	Colour	200dpi 300dpi	60ppm/120ipm 60ppm/120ipm	75ppm/150ipm 75ppm/150ipm	90ppm/180ipm 90ppm/170ipm
Landscape (A4)	B&W/Greyscale	200/300dpi	70ppm/140ipm	90ppm/180ipm	112ppm/225ipm
	Colour	200dpi 300dpi	70ppm/140ipm 70ppm/140ipm	90ppm/180ipm 90ppm/170ipm	112ppm/225ipm 112ppm/170ipm
DOCUMENT SPECIFICATIONS Size Thickness Long Document Mode	Width Length Automatic Feeding Bypass Mode	50.8 - 305mm 70 - 432mm 52 - 209g/m ² (0.06 - 0.25mm) 40 - 255g/m ² (0.05 - 0.30mm)	3000mm max. (Can be set on operation panel)		
Paper separation	Retard Roller				
Feeder Capacity (80 g/m ²)	300 Sheets (DR-6050C) / 500 sheets (DR-7550C/DR-9050C) Selectable 500, 300, 100 sheets (only 300 & 100 sheets for DR6050C)				
Feeding Modes	Automatic Feeding Mode, Continuous Manual Feeding Mode, Bypass Manual Feeding Mode(Offset feeding available with lockable side guides)				
Output Resolution	100 x 100dpi, 150 x 150dpi, 200 x 200dpi, 240 x 240dpi, 300 x 300dpi, 400 x 400dpi, 600 x 600dpi				
Output Mode Binary Greyscale Colour	B&W / Error Diffusion / Advanced Text Enhancement I & II 8-bit (256 level) Greyscale 24-bit colour				

PRODUCT FEATURES Image Processing	Auto Page Size Detection & Deskew Skip Blank Page Text Orientation Recognition Auto Colour Detection Colour Dropout (R/G/B/Custom) / Enhancement (R/G/B/Custom) Advanced Text Enhancement (I & II) Moire Reduction Prevent Bleed Through / Remove Background Black Border Removal (use white border) Batch Separation Punch Hole Removal Scan Area Setting MultiStream™ Pre Scan	
Device	Staple Detection Rapid Recovery System Ultrasonic Double Feed Detection Job Function / User Registration Verify Scan / Count Only Mode/ Count Clear Buzzer Alarm	
BUNDLED SOFTWARE	ISIS / TWAIN Drivers (Windows 2000/ XP Pro/ XP Home/ Vista 32-bit & 64-bit) Capture Perfect 3.0 (Capture Perfect SDK available through Canon Business Solutions Developer Programme - www.canon-europe.com/bsdip)	
Options	Post - Imprinter (Front side) Patch Code Decoder Barcode Module III	
Consumables	Exchange Roller Kit Ink Cartridges	
Suggested Daily Duty Cycle	DR-6050C	Approx. 12,000 scans / day
	DR-7550C	Approx. 15,000 scans / day
	DR-9050C	Approx. 18,000 scans / day
<p>¹ The scanning speed depends on the specification of PC and the setting of functions.</p> <p>Some images are simulated for clarity of reproduction. All data is based on Canon's standard testing methods. This leaflet and the specifications of the product have been developed prior to the date of product launch. Final are subject to change without notice.™ and ©: All company and/or product names are trademarks and/or registered trademarks of their respective manufacturers in their markets and/or countries.</p>		

Capture Perfect



Canon Electronics Inc.
www.canon.com

Canon Europa
www.canon-europe.com

English Edition
© Canon Europa 2009 (0000)